

C&I Demand Response and EV Charging Programs

Bill O'Connor

Supervisor, Demand Response

Robert Whelan

Customer Programs and Products Manager

Jacob Buckman

Program Manager, Electric Mobility

BROUGHT TO YOU BY

EVERSOURCE

 **CNG · SCG · UI**
Part of the Avangrid family

PROUD SPONSORS OF

energize 
CONNECTICUT

Agenda

1

Electric C&I DR

2

Electric & Gas C&I DR

3

C&I CT Energy Storage Solutions Program

4

CT EV Charging Program

5

Q & A

Setup and Participation Process

- ✓ We conduct a no-cost energy survey
- ✓ Identify equipment and/or processes for demand reduction
- ✓ Develop optimal action plan
- ✓ Participation is easy



Electric Incentive Payments

- Determine optimal load reduction strategies
- Events: 2-3 hours
- Incentives are 100% performance-based

Performance Period	Timeframe	Max Events	Incentive per Reduced kW:
Summer	June to September	12	\$50.00
Winter	December to March	6	

Gas Incentive Payments

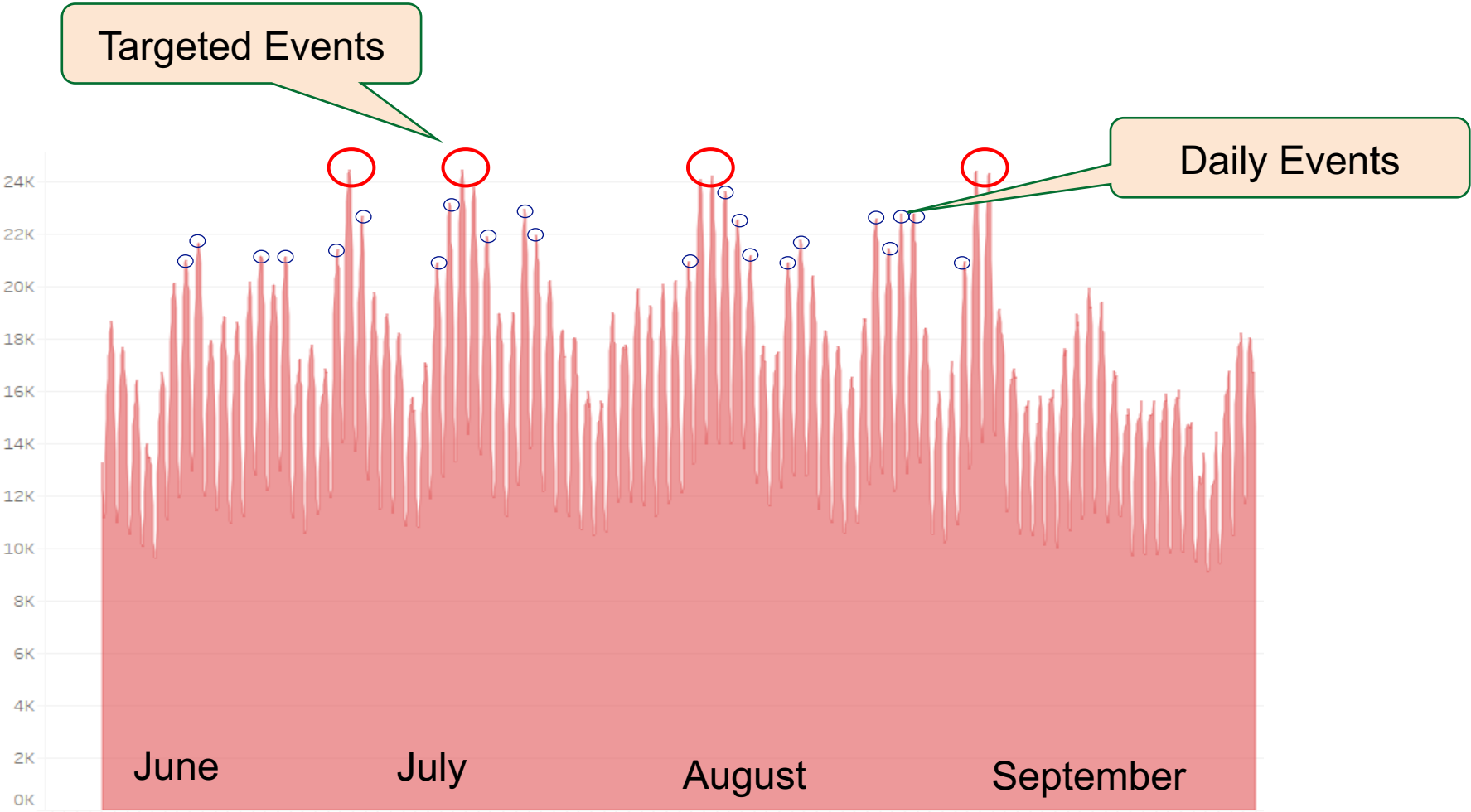
- Determine optimal load reduction strategies
- Event trigger points (New for 2024)
 - Stage 1: DAT 32° F Minimum Trigger Point Data Collection
 - Stage 2: DAT 25° F ISO-NE Days w/ Tight Supply Conditions
 - Stage 3: DAT 18° F SCG/CNG – Distribution System Constraints

Performance Period	Timeframe	Duration	Max Events	Incentive per Reduced CCF:
Winter	November through March	24 hours (10am – 10am next day)	6	\$10 per 24-hour event

Two ways to Participate in ConnectedSolutions

	Program Parameters
Targeted Dispatch	<ul style="list-style-type: none">• 3 - 8 events per summer• 3 hours per event• \$35/kW - summer curtailment• +\$10/kW weekend bonus
Daily Dispatch	<ul style="list-style-type: none">• 30-60 events per summer• 2-3 hours per event• Technology agnostic• \$200/kW - summer C&I

Commercial / Industrial Programs



Typical Summer Daily ISO-NE Peaks

Strategies and Technologies Typical to Dispatch Scenarios

TARGETED DISPATCH

Usually Manual

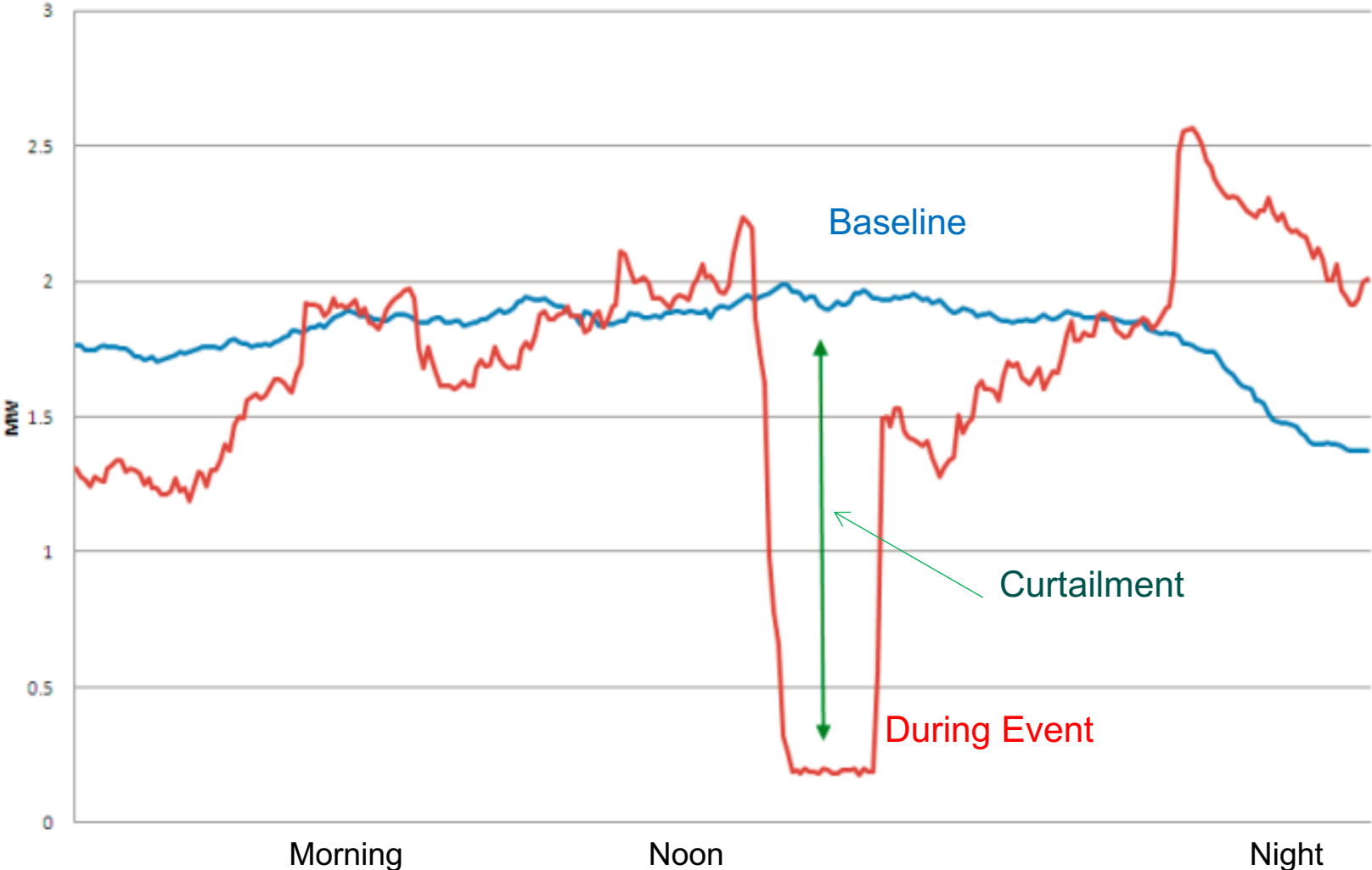
- Temperature setback ~3°F
- VFD speed limiting
- Early setback
- Process changes
- Rarely lighting
- Generation

DAILY DISPATCH

Usually Automatic

- NO BATTERIES
- Flywheels
- Thermal Storage
- Industrial Freezers

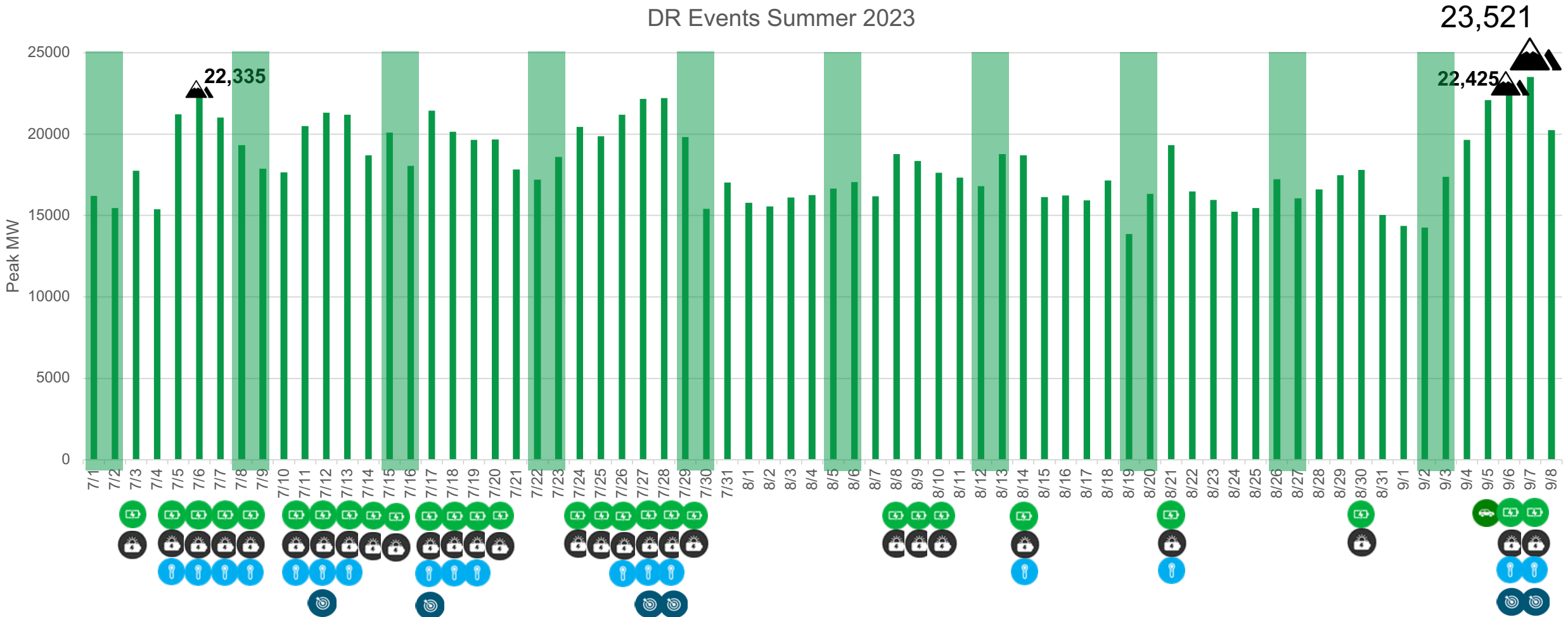
How performance is calculated



Events Summer 2023

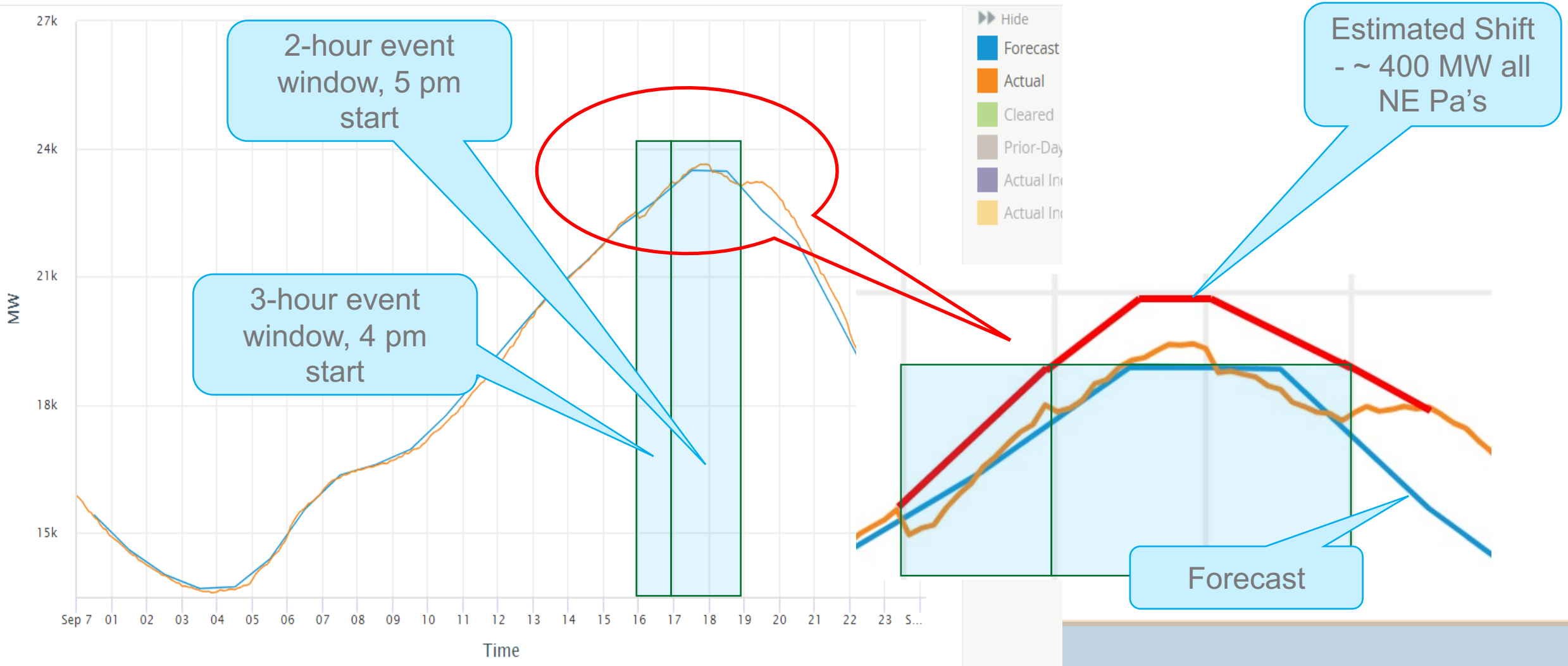


DR Events Summer 2023



Effect on the ISO-NE Grid on Summer Peak Day 9/7/2023

Date: 09/07/2023 ▼

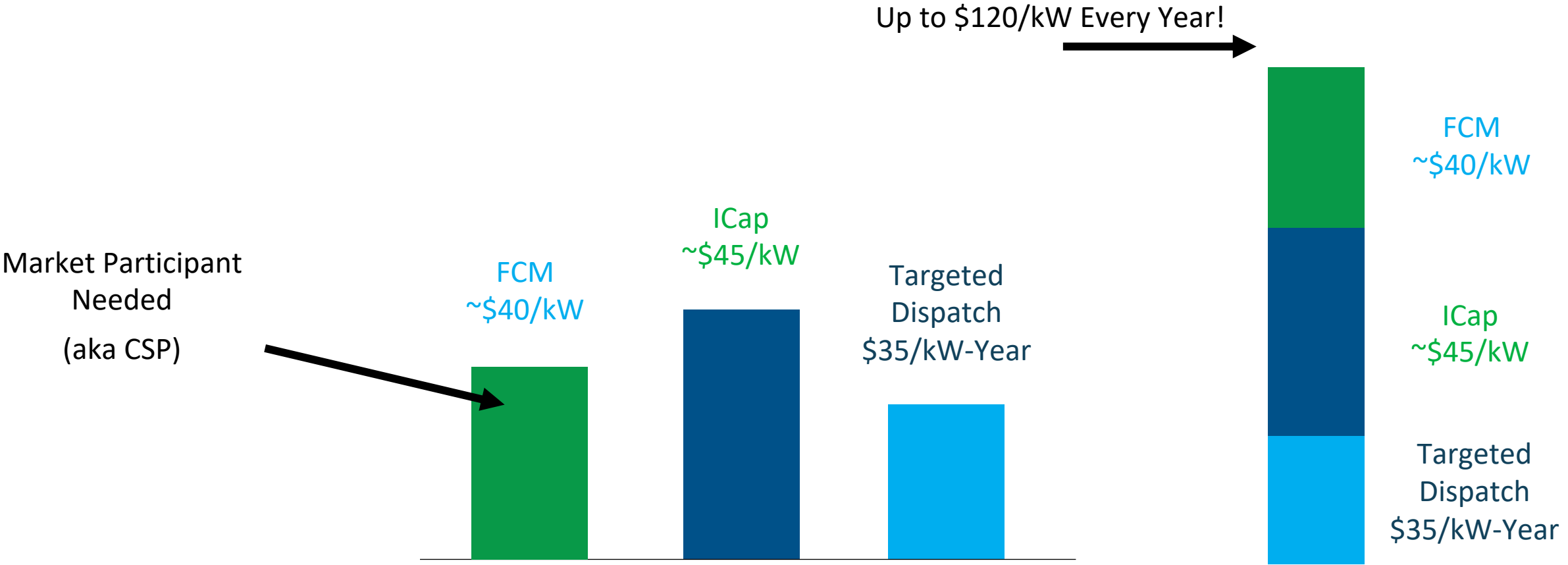


2023 Summer Demand C&I – CT Results

CT	Total Sites Enrolled	Total Customers
Targeted Curtailment	319	133
Targeted Thermal Storage	1	1
Daily Curtailment	22	9
Daily Battery Storage	6	3
Total	348	146

CT	Total KW Curtailed	Incentives Paid
Targeted Curtailment	59975	\$ 2,099,116.60
Targeted Thermal Storage	1000	\$ 75000.00
Daily Curtailment	3422	\$ 684,368.00
Daily Battery Storage	670	\$ 134,220.00
Total	65067	\$ 2,917,704.60

Revenue Stacking Potential



Talk to your CSP about other opportunities

Energy Storage Solutions

Overview

- **9-year program** with a deployment goal of 580 MW
- **40% of projects are** in Low Income and Underserved Communities

Requirements

- **Contractors and Third-Party Owners pre-approval**
- **Apply with Connecticut Green Bank** and EDC
- **Install approved technology** (both Battery and Inverter) only



Upfront Incentive Structure

- Must enroll in Passive Dispatch*
- Upfront incentive adders are available for “Priority Customers”
 - Small Businesses, Critical Facilities, Fossil fuel generator replacements, Grid Edge
- Inflation Reduction Act Solar Tax Credits**
 - 30% of qualified cost
 - Additional 10%-20% adder if project is in a [designated low-income \(distressed municipality\) area](#)

C&I MW Approved and Capacity Remaining
38.9
 MW Capacity Limit: 100.0 (+61.12%)

Effective Upfront Incentive (2024-2025)*

	Effective Upfront Incentive (\$/kWh)		
	Small Commercial	Medium Commercial	Large Commercial
Peak Demand	< 200 kW	200 kW – 500 kW	> 500 kW
Tranche 2 Incentives (100 MW)	\$200	\$175	\$100
Priority Customer Adder (if applicable)	+25%	+25%	+25%

*Passive Dispatch: June thru August, 5-hour duration, 3pm-8pm, all non-holiday weekdays, 20% reserve

**Disclaimer: This summary does not represent tax advice. Outside tax counsel may be required to consider tax credit project structure, and rules and guidance from the Federal government and the Massachusetts government are pending.

Performance Incentive Structure

- **Active dispatch events are optional**
- **Battery owners can enroll in active only**
- **EDCs provide a 24-hour notice of event**
- **Incentive payments will be paid 2x per year**

Residential / Commercial and Industrial End-Use Annual Performance Based Incentives (2024-2025)*

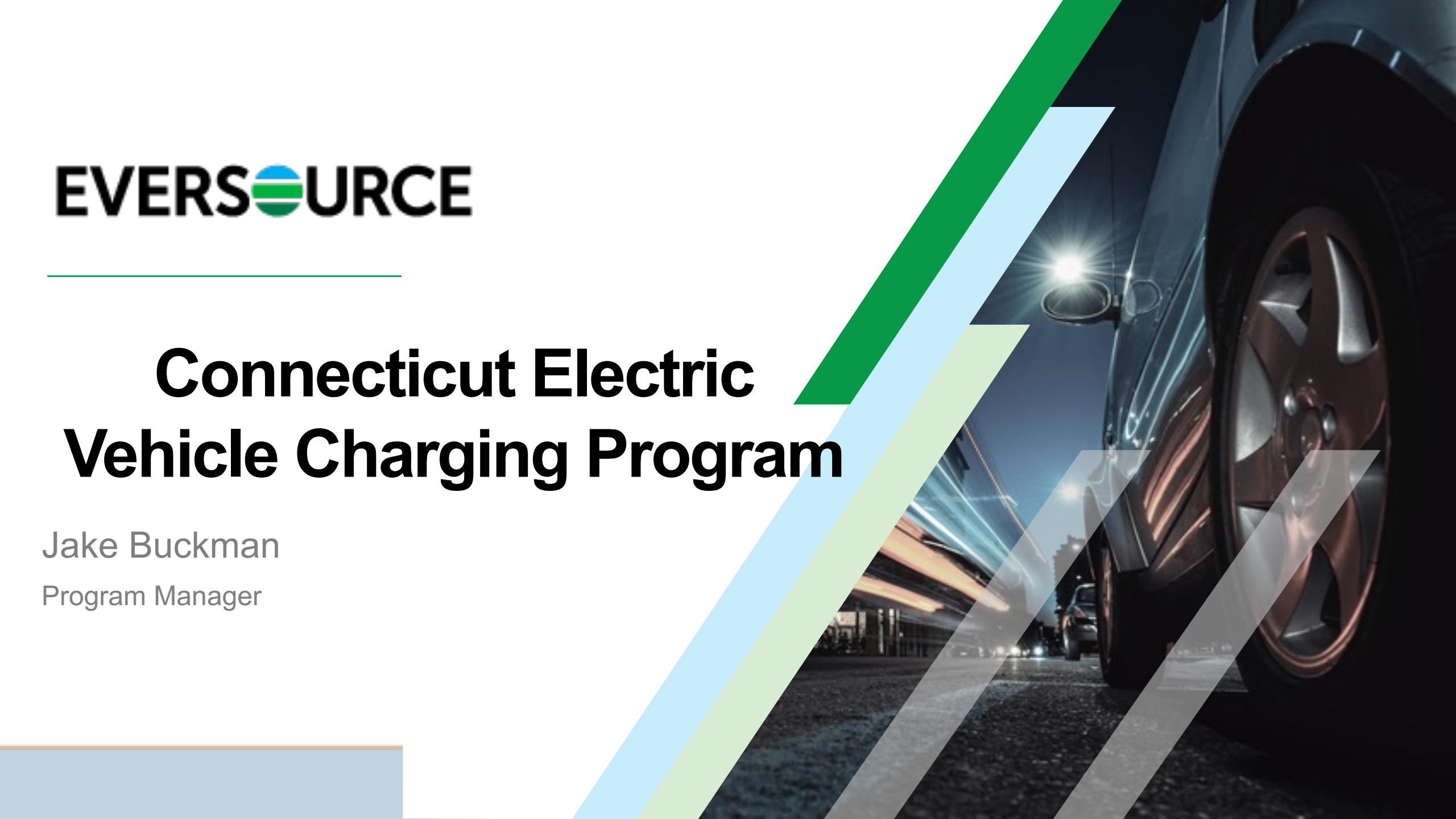
	Years 1-5		Years 6-10	
	Summer	Winter	Summer	Winter
Maximum Season Incentive (\$/kW)*	\$200	\$25	\$115	\$15
Maximum Annual Incentive (\$/kW)*	\$225		\$130	

*Based on average amount of kW exported to grid across number of called events within period



Connecticut Electric Vehicle Charging Program

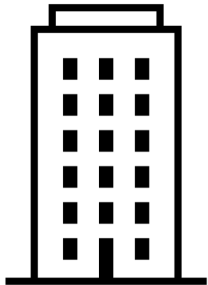
Jake Buckman
Program Manager



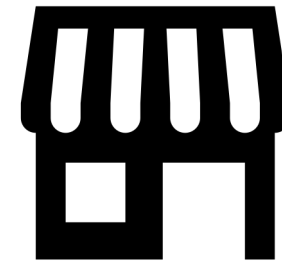
Benefits to *You & Your Customers*

- **Meet Sustainability Goals**
- **Provide Valuable Amenities**
- **Attract Employees and Visitors**
- **Increase Dwell Times**

Eligible Customer Segments



- **Towns & Cities**
- **Multi-Unit/Multifamily Dwellings**



- **Retail Business**
- **Workplaces**

Commercial EV Charging Incentive Levels

Level 2:

Baseline: \$20,000

Underserved: \$40,000

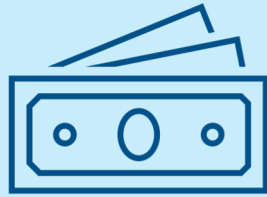
DCFC:

Baseline: \$150,000

Underserved: \$250,000

Location	EV Charger Type	Per Site Maximum Rebate Amounts	Property Type	Port Installation Requirements
Baseline	Level 2	Up to \$20,000	Multifamily	2
			Public	Fully Subscribed 2
			Workplace	4
	DCFC	Up to \$150,000	Any	2
Underserved	Level 2	Up to \$40,000	Multifamily	2
			Public	Fully Subscribed 2
			Workplace	4
	DCFC	Up to \$250,000	Any	2

Eligibility



Eligible Costs

Rebate Capped At:

- Make-ready installation: up to 100%
- Futureproofing: up to 100%
- Chargers: up to 50%



EV Charger Qualified Product List (QPL)

- Charger & Network Provider must be on list

What's Covered?

	Covered by incentives		Paid for by the customer
	Infrastructure	Electric vehicle supply equipment (EVSE) hardware	Other soft costs
Examples	<ul style="list-style-type: none"> - Conduit & trenching - Oversized panels - Futureproofing - Cost paid to Eversource for new or upgraded electric service - Pads - Permitting, site design and engineering 	<ul style="list-style-type: none"> - Level 2 charging stations - DCFC charging stations 	<ul style="list-style-type: none"> - Signs - Bollard - Network fees - Maintenance fees - Charger warranty
Paid for by	Eversource reimburse up to 100%	Eversource reimburse up to 50%	Customer
	Customer responsible for any remainder above cap.	Customer responsible for the remainder	

Project Examples

Project Description	Measures	Proposed Total Cost	L2/DCFC Charger Cost	Make Ready Installation Cost	Proposed Rebate	Net Cost
Retail (Underserved)	2 Ports Level 2 charging station	\$34,324	\$6,618	\$27,706	\$31,015	\$3,309
Fleet (Underserved)	10 Ports level 2 charging stations	\$70,008	\$33,619	\$36,389	\$40,000	\$30,008
MUD (Baseline)	4 Ports Level 2 charging station	\$18,081	\$12,037	\$6,044	\$12,065	\$6,016
DCFC located at Dealership (Baseline)	2 Ports DCFC station	\$188,937	\$81,600	\$107,337	\$148,137	\$40,600



Questions

Thank You



For more program information:

Demand Response:

[Eversource.com/demand-management](https://eversource.com/demand-management)
connectedsolutions@eversource.com

UIBusinessDemandResponse.com
UI_ADR@Honeywell.com

SCGBusinessGasDemandResponse.com
info@SCGBusinessGasDemandResponse.com

CNGBusinessGasDemandResponse.com
info@CNGBusinessGasDemandResponse.com

Thank You



For more program information:

Energy Storage:

[Energystoragect.com](http://energystoragect.com)

energystoragesolutions@eversource.com

energystoragesolutions@uinet.com

CT EV Charging Program:

CTEVcharging@Eversource.com